

WELCOME!

TURNER
INDUSTRIES





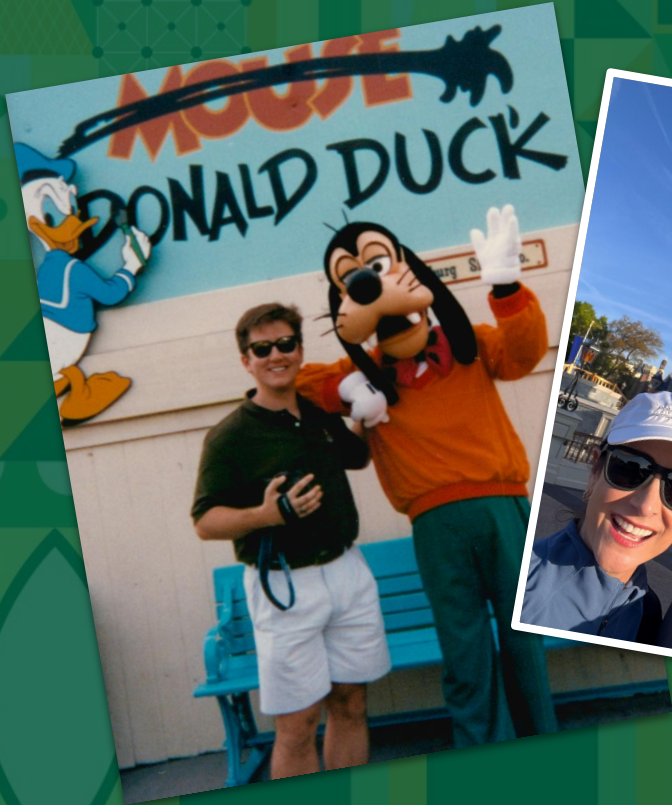
WHY WE'RE HERE TODAY

It's a Small World After All

As kids, we went to Disney and were wonderstruck by the magical environment. Decades later, we are returning to be a part of the same, awe-inspiring work you create.



It's a Small World After All



Stevie Toups, CEO of Turner Industries and a regular *Disney dad*, shares in the hope to return to the magical world of Disney to aid in the building of memories to last a lifetime. Stevie envisions a long-term partnership built on making FAM employees successful.

New industries. Same skilled craft.



ExxonMobil



EASTMAN

 **BASF**

We create chemistry



 Solugen



Hut 8[®]

SPACEX



TESLA



NOVEON
MAGNETICS

Lilly





ABOUT US



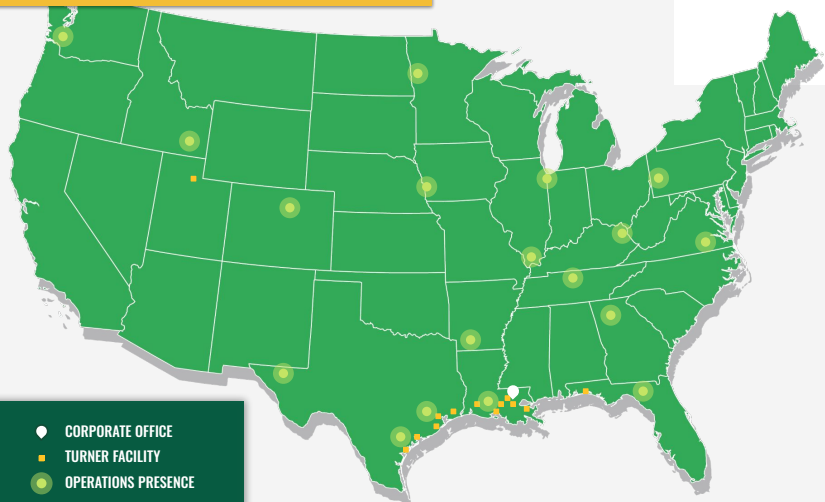
**TURNER
INDUSTRIES**

AT-A-GLANCE

1961 **FOUNDED BY BERT S. TURNER**

PRIVATELY HELD BY THE TURNER FAMILY SINCE DAY ONE

COAST-TO-COAST OPERATIONS



PEAK HEADCOUNT: 22,000

TURNKEY SERVICES

- **CONSTRUCTION**
- **MAINTENANCE**
- **TURNAROUND**
- **FABRICATION**
- **EQUIPMENT**
- **SPECIALTY SERVICES**

We provide turnkey industrial services and solutions to the companies that produce energy and materials essential to modern life.

The background is a complex, repeating geometric pattern in various shades of green. It features a mix of shapes including squares, triangles, circles, and lines, some forming a grid or network-like structure. The overall style is modern and abstract. The word "SAFETY" is centered in a bold, yellow, sans-serif font.

SAFETY



Safety isn't just a priority at Turner because priorities can change — it's the foundation of our success.

We build a culture of safety into everything we do. We're always exploring new and innovative strategies to ensure the safety of our employees as well as the protection of company and client assets.

**ALL
ABOUT
SAFETY**



STEPHEN TOUPS
CEO, Turner Industries

2025 SAFETY STATISTICS

491 WORKSITES

HOURS WORKED

45,827,995

INJURY-FREE WORKSITES

78%

WORKHOURS



RECORDABLE FREE WORKSITES

92%

TRIR

0.24

RECOGNITION FOR SAFETY, INNOVATION, AND PROJECT EXCELLENCE ACROSS INDUSTRIES



**#1 OVERALL
ABC NATIONAL
TOP PERFORMER**



**AFPM
INNOVATION
AWARD**



**4X CURT
CONSTRUCTION
INDUSTRY SAFETY
EXCELLENCE AWARD**



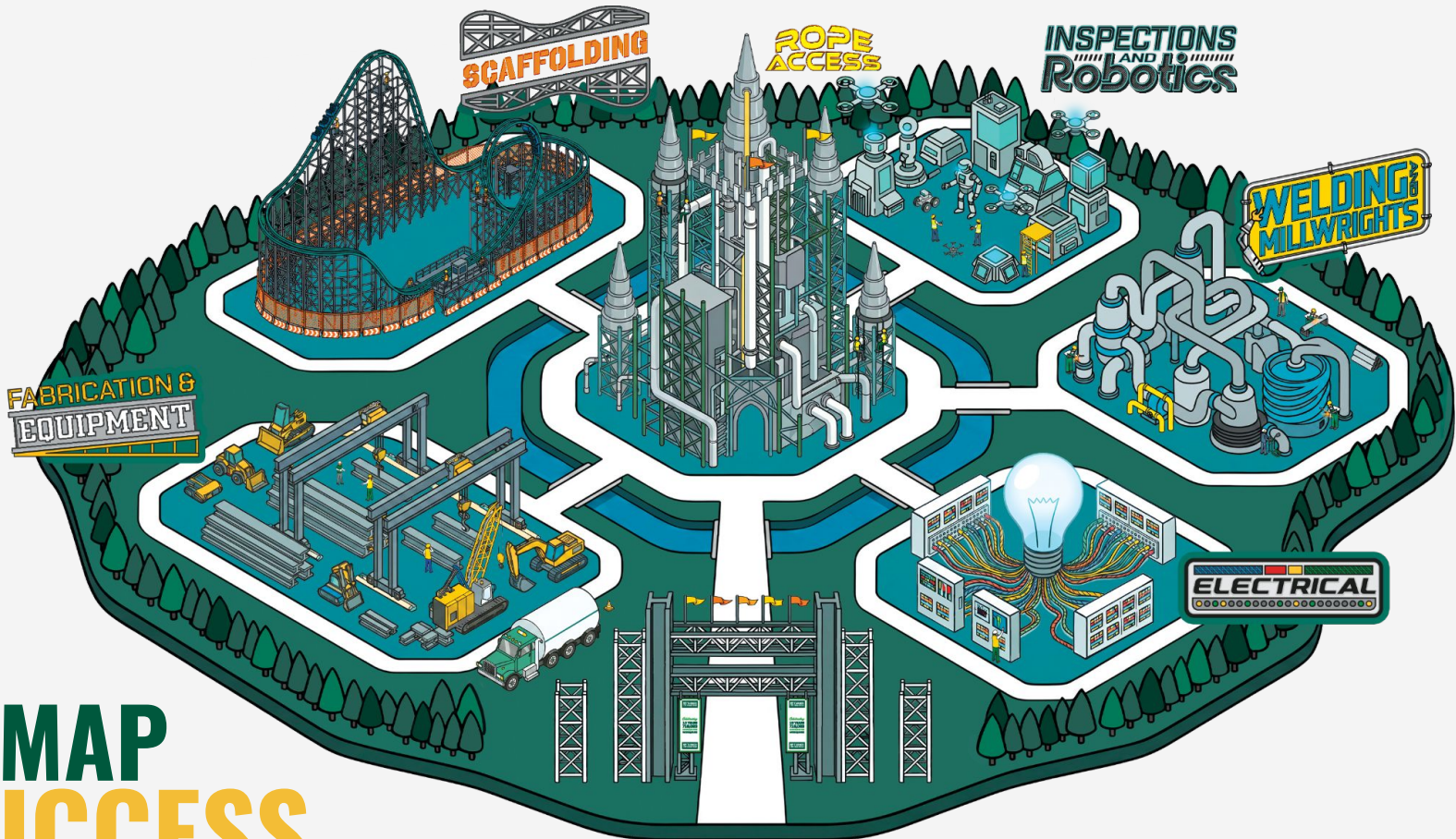
**FORBES 2026
AMERICA'S
BEST LARGE
EMPLOYERS LIST**



**CONSTRUCTECH
TOP PRODUCT
AWARD**

The background is a complex, repeating geometric pattern in various shades of green. It features a mix of triangles, squares, and circles, some of which are arranged in grid-like or lattice structures. The overall effect is a textured, modern aesthetic. The word 'SERVICES' is centered in a bold, yellow, sans-serif font.

SERVICES



OUR MAP
TO
YOUR **SUCCESS**

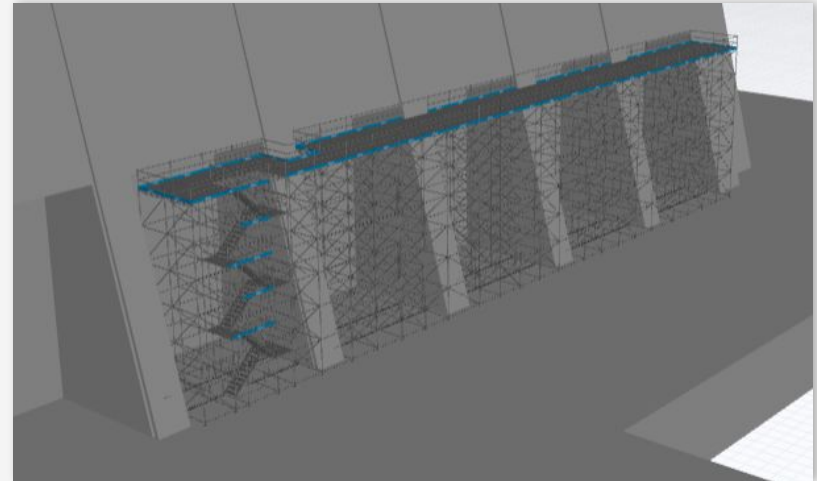
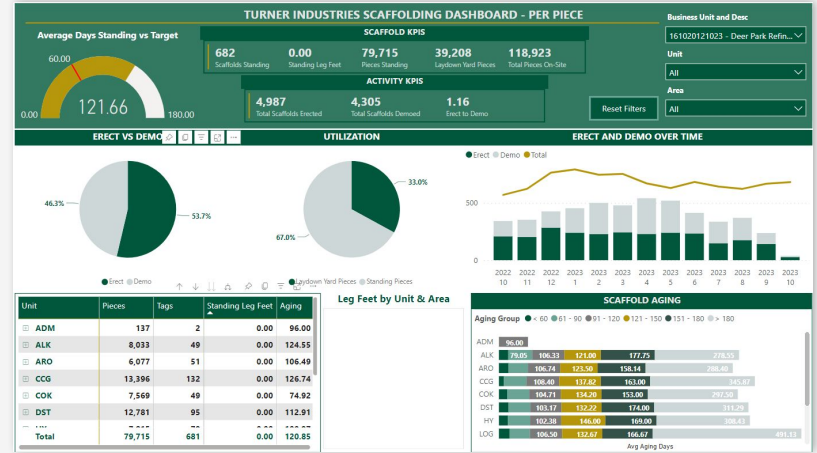
OUR SERVICES

SCAFFOLDING

TURNER OFFERS A LOCATION TRACKING & 3D MODELING PROGRAMS TO MAKE DATA-DRIVEN SCAFFOLDING DECISIONS

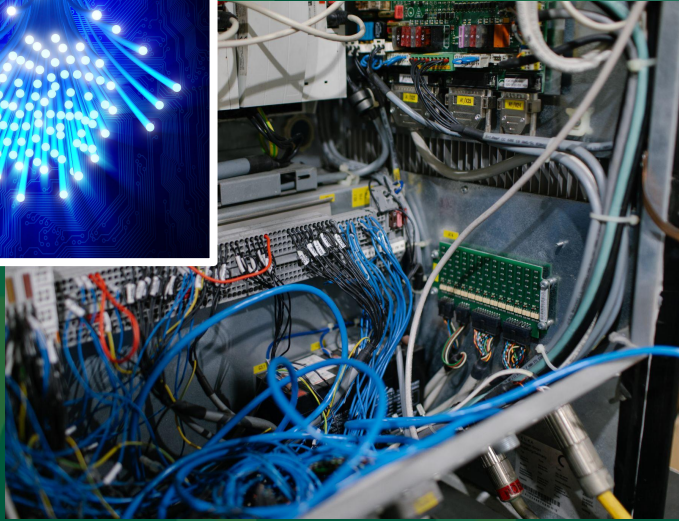
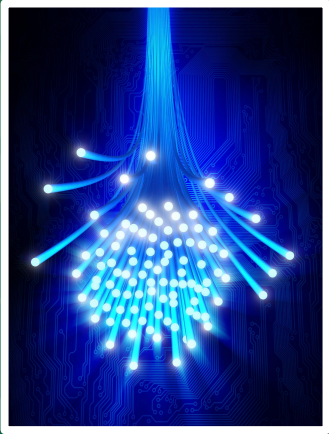
Scaffolding is an increasingly data-driven business, and Turner is armed with information to lower the cost of this service. Features include:

- 3D Modeling / Estimating Software
- GPS locations for standing scaffolds
- Data entry is completed on the tablet and tied to that scaffold/location
- Automated billing
- Automated & standardized KPI calculations



OUR SERVICES

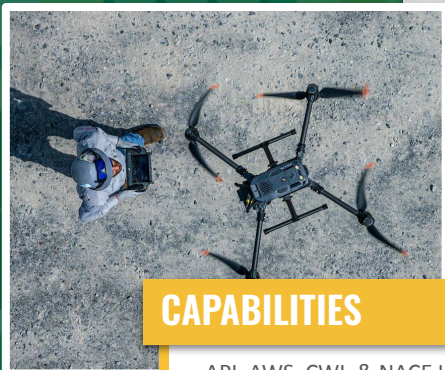
ELECTRICAL



- MCCs, Power Equipment Room, Medium / High Voltage Cabling Terminations
- PLCs & Controls
- Lighting & Controls
- Raceways: Below & Above Ground
- Access Controls, Camera and Communication Systems
- Fiber Optic Testing and Terminations
- Lightning Protection
- Grounding

OUR SERVICES

INSPECTIONS & ROBOTICS



CAPABILITIES

API, AWS ,CWI, & NACE Inspectors / NDE Technicians
Phased Array, Total Focusing Method, Automated UT
Radiographic Testing (CR, DR, Conventional, Real-Time)
Liquid Penetrant Testing / Magnetic Particle / UT Thickness
Pulsed Eddy Current (CUI)
Guided Wave Testing
Program Management / Moisture Detection
Positive Material Identification (OES & XRF)



ROBOTIC TECHNOLOGY

- **Elios 3 by Flyability:** Inspect ceiling or high track welds
- **Zenith:** Inspect high structures or support pillars
- **DJI Matrice 600 Optical Gas Drone:** Instantly finds HVAC system leaks
- **XR Spider:** Inspect and crawl up pillars to inspect steel thickness
- **GE Bike:** Crawls through piping throughout the parks



XR Spider



Elios 3 by
Flyability



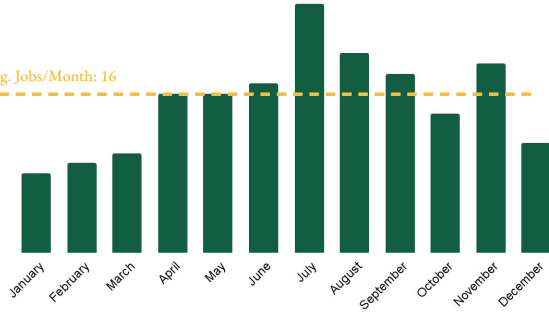
Zenith

OUR SERVICES

ROPE ACCESS

CLIENT REPORTED ROPE ACCESS COST SAVINGS

Avg. Jobs/Month: 16



Conventional Cost vs. RA Actual Cost

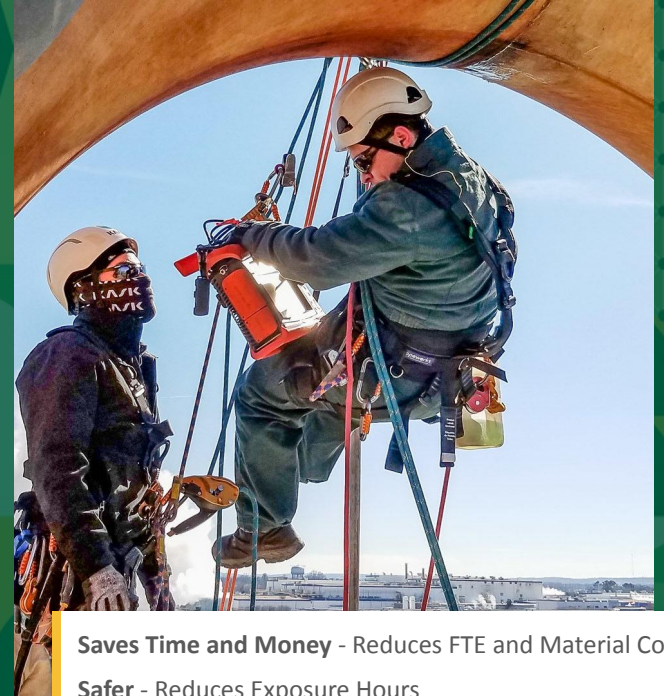
Conventional Cost **\$7.88M**

RA Actual Cost **\$1.76M**

\$6.12M YTD Savings

Turner Client Use Case:

- 12 Months of RA
- 35 Craftsmen
- \$6.1MM in Savings
- Budgetary reductions validated by client



Saves Time and Money - Reduces FTE and Material Cost

Safer - Reduces Exposure Hours

Increases Efficiency - Shortens Equipment Downtime

OUR SERVICES

WELDING AND MILLWRIGHTS



- Certified Welding: AWS/CWI certified welding for the repair and reinforcement of ride supports, steel tracks, piping and station frameworks
- Specialty alloy welding (stainless steel/aluminum) and pump station overhauls
- Millwright services for the high-tolerance leveling and alignment
- Installation & Maintenance of heavy-duty gearboxes, bearing assemblies, and motor drives
- Welding and millwright services for Disney's central energy plants, chilled water loops, and fire systems.

OUR SERVICES

FABRICATION & EQUIPMENT



Fabrication Capabilities

- 40+ years as a trusted fabricator
- 450,000+ sq. ft. of shop space and 200 acres dedicated to module fabrication and assembly

On-site or off-site fabrication —
whatever fits your schedule

Equipment & Transportation Services

- **Crane & Equipment Rentals:** Reliable machinery matched to your project requirements
- **Rigging & Lifting Services:** Skilled crews delivering safe, precise heavy lifts
- **Heavy Haul & Long-Distance:** Specialized transportation for oversized and complex loads



WHAT WE VALUE



The Power of Safety:

Turner employees are given the authority and responsibility to pause work at any perceived hazard.

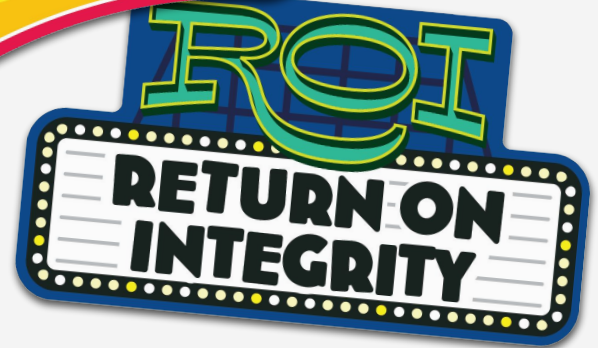
Your One Solution:

Turner offers a wide variety of services keeping clients from having to outsource.



65 Years:

Turner celebrates 65 years of delivering reliable service and success.



Return on Integrity:

Turner strives to be a force for good for clients, employees, and communities.

NEXT STEPS

Let Turner earn your trust one project at a time.

- ▶ **Have an Open Dialogue**
Connect with our team and the subject matter experts behind the work.
- ▶ **Walk Your Site Together**
Walking your facility with our team is one of the fastest ways to find common ground and spot where Turner can add real value.
- ▶ **Tour Our Facilities**
Come see how we work. From fabrication to equipment to specialty services, our shops and yards are open to you.
- ▶ **What would you like to do?**